

# Town of Appleton Hydric Soils

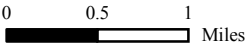
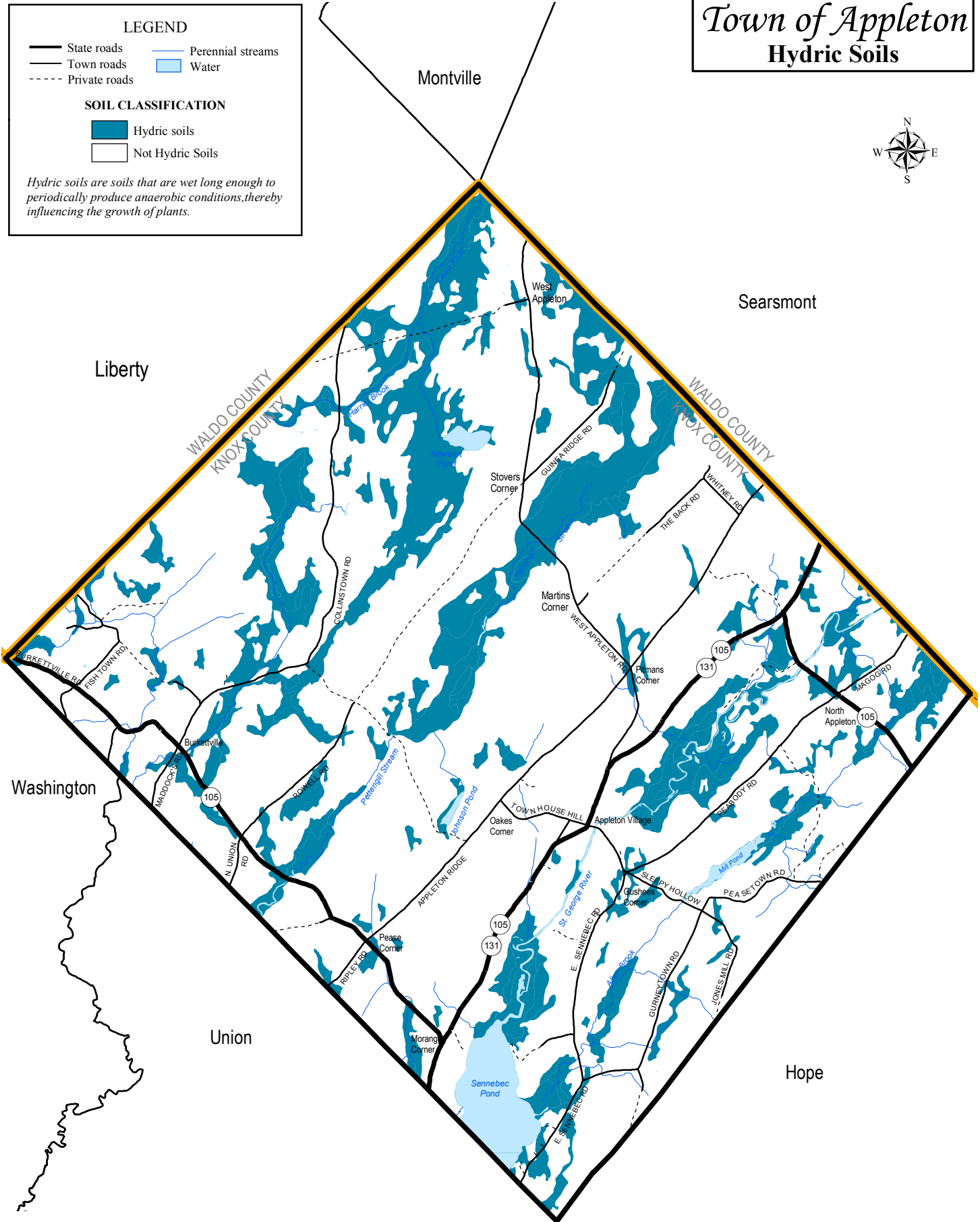
**LEGEND**

- State roads
- Town roads
- - - Private roads
- Perennial streams
- Water

**SOIL CLASSIFICATION**

- Hydric soils
- Not Hydric Soils

*Hydric soils are soils that are wet long enough to periodically produce anaerobic conditions, thereby influencing the growth of plants.*



Sources: USDA-NRCS, MEDOT and MEGIS  
Map revised: July, 2004

Mid-Coast Regional Planning Commission (MCRPC)  
Eastern Maine Development Corporation (EMDC)

[www.midcoastplanning.org](http://www.midcoastplanning.org) - [www.emdc.org](http://www.emdc.org)  
(207) 594-2299 - (207) 942-6389

See map disclaimer at end of the Executive Summary.